

electrical safety policy

The following document provides you with a brief summary of our Electrical Safety Policy Statement and sets out the level of service you can expect from believe housing.

believe housing as both an employer and a landlord has responsibilities towards its staff, tenants and others from the risks associated with electrical installations in properties it controls, owns and/or manages. This policy recognises the legal obligations in relation to electrical safety and demonstrates how believe housing will comply in accordance with current legislation and approved codes of practice. As a business responsible for domestic properties, workplaces, communal areas and other premises, we aim to ensure that our legal responsibilities summarised below are met:

electrical safety

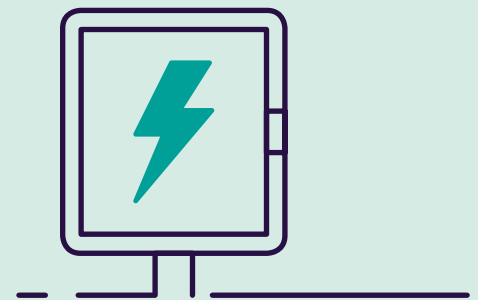
believe housing

- Listen to your concerns and act upon them.
- Ensure your home meets all electrical safety regulations.
- Assess the safety of our properties by periodically testing all electrical installations.
- Ensure that our employees have the relevant up to date skills, safety equipment and training.
- Ensure that our contract partners carry out work to the standards we request.

This policy applies to any building that is owned, occupied or managed by believe housing which has an electrical installation, and for which believe housing has responsibility for such installations.

customers

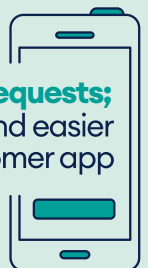
- Inform us straight away of any electrical repairs that need doing to your home.
- Give our employees access to your property to carry out any necessary work, including your five yearly safety check and inspection.



how to contact believe housing

- App: [click here to download](#)
- Call: **0300 1311 999**
- Email: hello@believehousing.co.uk
- Visit: www.believehousing.co.uk

repairs, rent and requests;
they're all quicker and easier
with our customer app



You can view the full electrical safety policy statement on our website at: www.believehousing.co.uk/policies